

BURGENLÄNDISCHES VOLKSLIEDARCHIV

Ort:

Großmühlbisch
1932

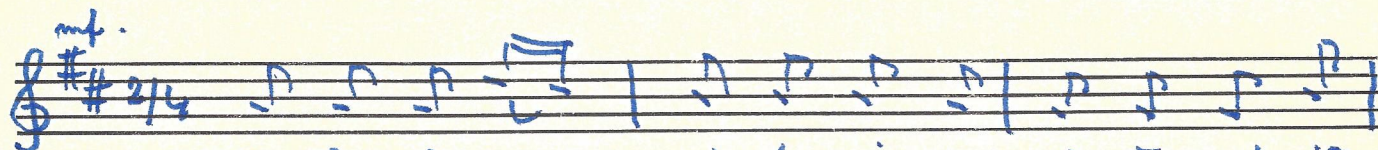
Überlieferer:

Aufzeichner und Einsender:

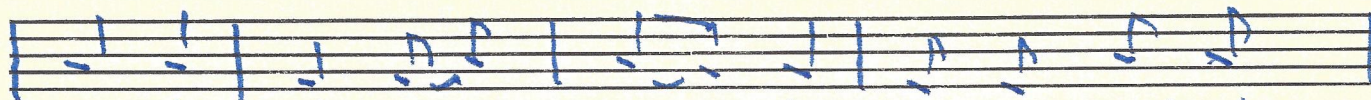
← Anton Szucsich

167/47

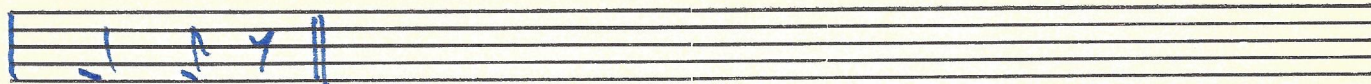
Skuhala sam vicericu



1. Sku-ha-la sam vi-će-ti-cu vi-će-rad je,
2. Pro-ster-la sam po-stelji-su va nju se lec'



me-ću, mid za zla-to vi-će-rad je,
neću, mit za zla-to va nju se lec'



ne-ću.
ne-ću.

